

# 2021 BUTLER PAVING PROGRAM

## SEQUENCE OF CONSTRUCTION

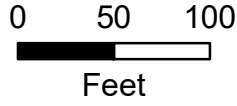
\*THE FOLLOWING SCHEDULE IS PRELIMINARY AND IS SUBJECT TO CHANGE. THE TASKS LISTED BELOW ARE ONLY THE ROADWAY ACCESS LIMITING ACTIVITIES. OTHER CONSTRUCTION RELATED ACTIVITIES MAY BE OCCURRING. WORK MENTIONED BELOW OCCURS IN ALL PHASES UNLESS SPECIFIC PHASE OR PHASES ARE SPECIFIED.

TOTAL PROJECT DURATION = 87 days

Construction Activities that Limit Driveway Access during Project:

- + 42 Days - Utility Construction (Limited Access to Driveways)
- + 4 Days - Excavation (Limited Access to Driveways)
- + 20 Days - Concrete Paving Operations - Duration Split Between Phases 1-3 (No Driveway Access)
- + 2 Days - Asphalt Paving Operations - Phase 4 (Access to Driveways in the Evening)

\*RESIDENTS AND BUSINESS TRAFFIC ARE EXPECTED TO PARK ON SIDE STREETS DURING PAVING OPERATIONS.

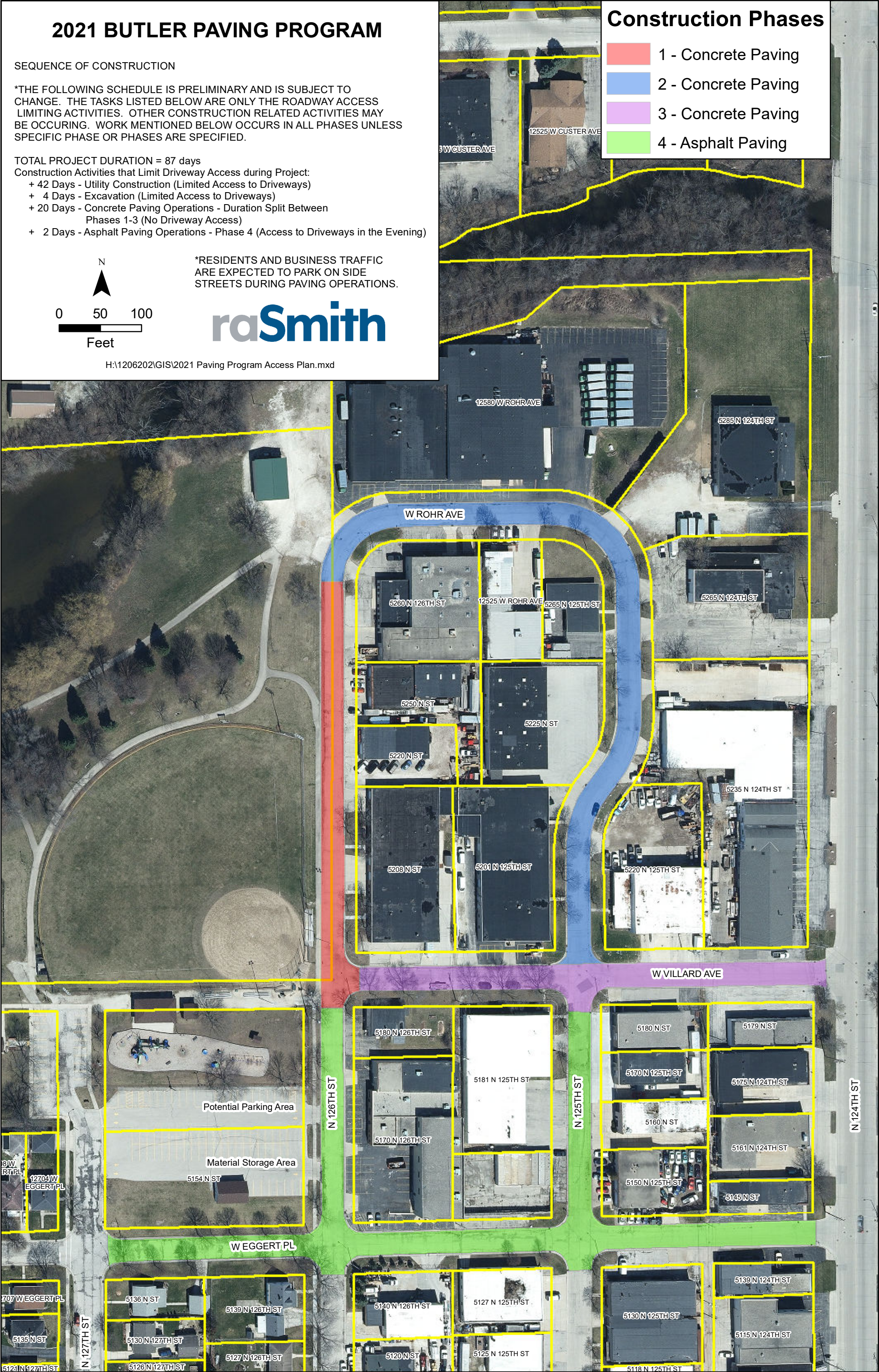


**raSmith**

H:\1206202\GIS\2021 Paving Program Access Plan.mxd

## Construction Phases

- 1 - Concrete Paving
- 2 - Concrete Paving
- 3 - Concrete Paving
- 4 - Asphalt Paving



Potential Parking Area

Material Storage Area

5154 N ST

W EGGERT PL

5136 N ST

5139 N 126TH ST

5130 N 127TH ST

5127 N 126TH ST

5126 N 127TH ST

5121 N 127TH ST

5135 N ST

5139 N 124TH ST

5115 N 124TH ST

5180 N 126TH ST

5170 N 126TH ST

5181 N 125TH ST

5170 N 125TH ST

5160 N ST

5150 N 125TH ST

5179 N ST

5175 N 124TH ST

5161 N 124TH ST

5145 N ST

N 126TH ST

N 125TH ST

N 124TH ST

5180 N ST

5170 N 125TH ST

5160 N ST

5150 N 125TH ST

5179 N ST

5175 N 124TH ST

5161 N 124TH ST

5145 N ST

5139 N 124TH ST

5115 N 124TH ST

5130 N 125TH ST

5118 N 125TH ST